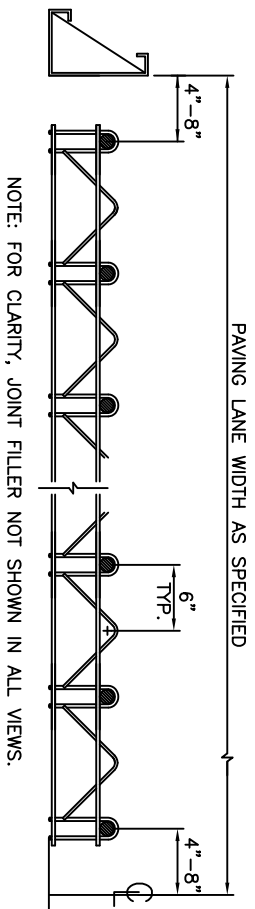
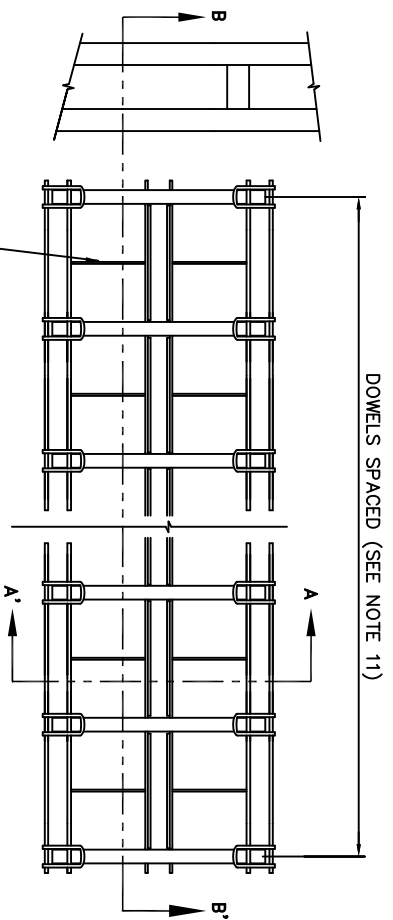


SECTION: A-A'



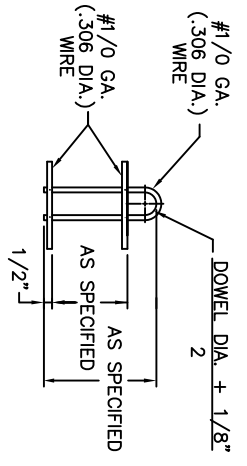
SECTION: B-B'

NOTE: FOR CLARITY, JOINT FILLER NOT SHOWN IN ALL VIEWS.

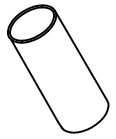


PLAN VIEW

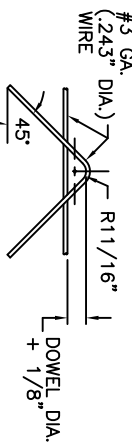
REVISION: B DATE: 03-16-10 BY:K.COUCH
 REVISION: A DATE: 03-08-10 BY:K.COUCH



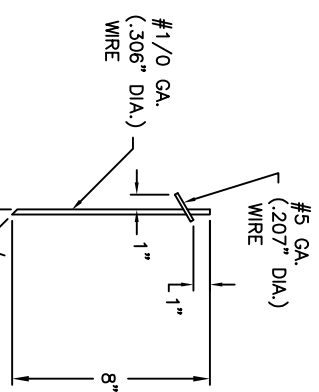
DETAIL: U-LEG



DETAIL: DOWEL CAP



DETAIL: JOINT FILLER HOLDER



DETAIL: STAKE

NOTES:

- 1) DOWELS TO BE BILLET STEEL BARS PER AASHTO SPECIFICATION M-31 GR. 60 LATEST REV.
- 2) (ASTM A-615 GR. 60). DOWEL COATING - EPOXY COATED PER N.Y. STATE D.O.T. SPECIFICATION 705.15 (3M-SCOTCHKOTE 413) 10-18 MIL THICK AND DIPPED INTO TECHTIL 506 BOND BREAKER.
- 3) DOWELS ARE TO BE SAW CUT AND DEBURRED.
- 4) WIRE SIZES SHOWN ARE MINIMUM REQ'D.
- 5) ALL WIRE INTERSECTIONS ARE TO BE RESISTANCE WELDED.
- 6) STAKES, 8 PER ASSEMBLY ARE TO BE APPLIED AT THE WORKING END OF DOWELS ONLY.
- 7) TOLERANCES:
 - A) ±1/8" UNLESS OTHERWISE SPECIFIED.
 - B) CENTERLINE OF INDIVIDUAL DOWELS SHALL BE PARALLEL TO SUBGRADE AND ALL OTHER DOWELS IN ASSEMBLY WITHIN ±1/8" mm.
- 8) DOWEL CAPS FURNISHED LOOSE AND APPLIED IN FIELD OPPOSITE WELDS
- 9) SIDES HELD TOGETHER WITH THE WIRE, ALLOWING QUICK SEPERATION OF SIDES AND INSERTION OF EXPANSION MATERIAL PROVIDED IN FIELD. THE WIRE CUT IN FIELD AFTER STAKING.
- 10) DOWEL CAPS - POLYETHYLENE x 4"; I.D. + 1/8" OF DOWEL DIAMETER. (DAYTON K-11)
- 11) WHEN THE LANE WIDTH IS DIFFERENT FROM 12' 0", THE MINIMUM EDGE DISTANCE OF 6" TO THE AXIS OF THE END DOWELS MUST BE MAINTAINED. THE NUMBER OF DOWELS MUST MEET THE DESIGN REQUIREMENTS AND THE SPACING OF THE DOWELS MUST BE ADJUSTED ACCORDINGLY.
- 12) T = PAVEMENT THICKNESS

FILED: g:\ocad\app ENG\YART BASKET\BHB2800-2899\BHB2872.REV#1.2.19.10.dwg

AMERICAN HIGHWAY TECHNOLOGY A DAYTON SUPERIOR CO. 2150B SOUTH ROUTE 45-52, KANKAKEE, IL 60901 PHONE: 815-936-3300 888-746-3751 FAX: 815-936-3306 WWW.DAYTONSUPERIOR.COM		ITEM WELDED DOWEL ASSEMBLY (WDA)
PROJECT	TRANSVERSE EXPANSION JOINT FOR CONCRETE PAVING	
LOCATION	NEW YORK	
ACCOUNT	NEW YORK DEPT OF TRANSPORTATION	
SCALE	NOT TO SCALE	DRAWING NO. NYS DOT-2
DRAWN	KEVIN COUCH	
DATE	2-24-10	SHEET 1 OF 1