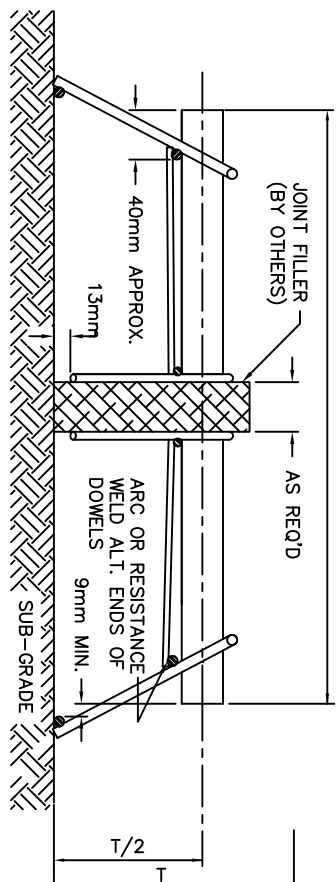
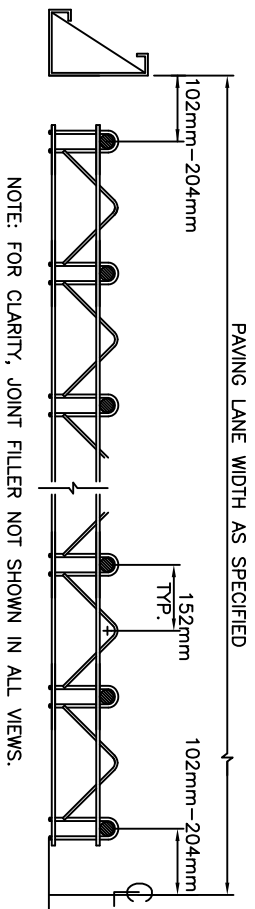


DIAMETER PER CONTRACT SPECIFICATION
458mm LENGTH TYPICAL

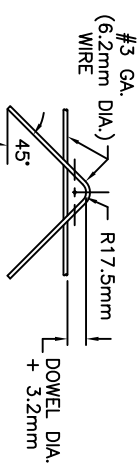


SECTION: A-A'

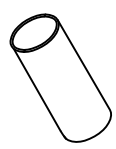


SECTION: B-B'

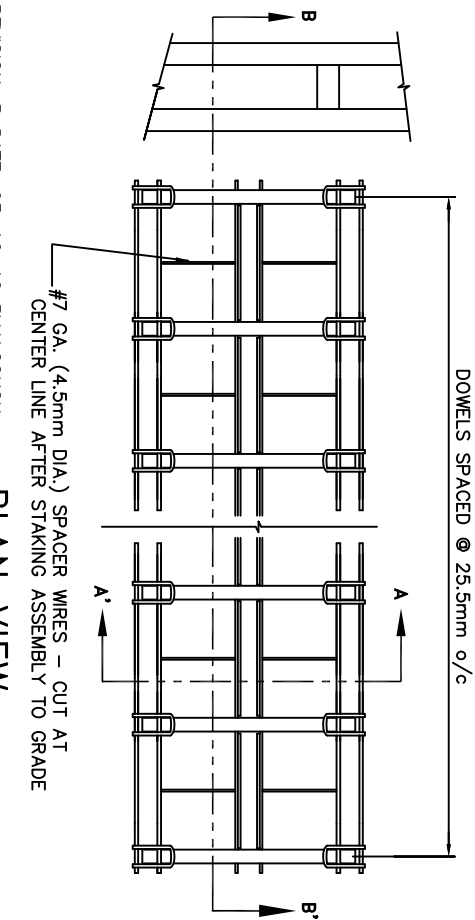
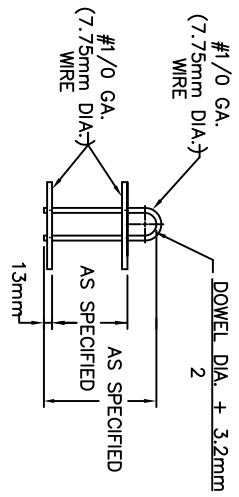
DETAIL: JOINT FILLER HOLDER



DETAIL: DOWEL CAP

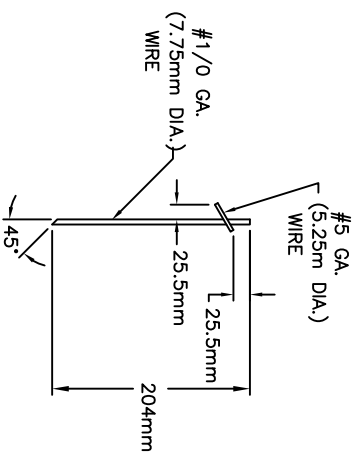


DETAIL: U-LEG



PLAN VIEW


DETAIL: STAKE



NOTES:

- 1) DOWELS TO BE BILLET STEEL BARS PER AASHTO SPECIFICATION M-31 GR. 420 LATEST REV.
- 2) (ASTM A-615 GR. 420) DOWEL COATING - EPOXY COATED PER N.Y. STATE D.O.T. SPECIFICATION 705.15 (3M-SCOTCHKOTE 413) (0.25-0.46mm) THICK AND DIPPED INTO TECHTL 506 BOND BREAKER.
- 3) DOWELS ARE TO BE SAW CUT AND DEBURRED.
- 4) WIRE SIZES SHOWN ARE MINIMUM REQ'D.
- 5) ALL WIRE INTERSECTIONS ARE TO BE RESISTANCE WELDED.
- 6) STAKES, 8 PER ASSEMBLY ARE TO BE APPLIED AT THE WORKING END OF DOWELS ONLY.
- 7) TOLERANCES:
 - A) ±3.2mm UNLESS OTHERWISE SPECIFIED.
 - B) CENTERLINE OF INDIVIDUAL DOWELS SHALL BE PARALLEL TO SUBGRADE AND ALL OTHER DOWELS IN ASSEMBLY WITHIN ±3.2mm.
- 8) DOWEL CAPS FURNISHED LOOSE AND APPLIED IN FIELD OPPOSITE WELDS.
- 9) SIDES HELD TOGETHER WITH THE WIRE, ALLOWING QUICK SEPARATION OF SIDES AND INSERTION OF EXPANSION MATERIAL PROVIDED IN FIELD. THE WIRE CUT IN FIELD AFTER STAKING.
- 10) DOWEL CAPS - POLYETHYLENE x 102mm; I.D. + 3.2mm OF DOWEL DIAMETER. (DAYTON K-11)
- 11) WHEN THE LANE WIDTH IS DIFFERENT FROM 3.6M, THE MINIMUM EDGE DISTANCE OF 102mm-204mm TO THE AXIS OF THE END DOWELS MUST BE MAINTAINED. THE NUMBER OF DOWELS MUST MEET THE DESIGN REQUIREMENTS AND THE SPACING OF THE DOWELS MUST BE ADJUSTED ACCORDINGLY.
- 12) T = PAVEMENT THICKNESS

FILED: g:\ocad\app ENG\YART\BASKET\BHB2800-2899\BHB2872.REV#1.2.19.10.dwg

<p align="center">  AMERICAN HIGHWAY TECHNOLOGY A DAYTON SUPERIOR CO. </p>	
ITEM	WELDED DOWEL ASSEMBLY (WDA)
PROJECT	TRANSVERSE EXPANSION JOINT FOR CONCRETE PAVING
LOCATION	NEW YORK
ACCOUNT	NEW YORK DEPT OF TRANSPORTATION
SCALE	NOT TO SCALE
DRAWN	KEVIN COUCH
DATE	2-24-10
DRAWING NO. NYS DOT-2M SHEET 1 OF 1	

REVISION: B DATE: 03-16-10 BY:K.COUCH
 REVISION: A DATE: 03-08-10 BY:K.COUCH