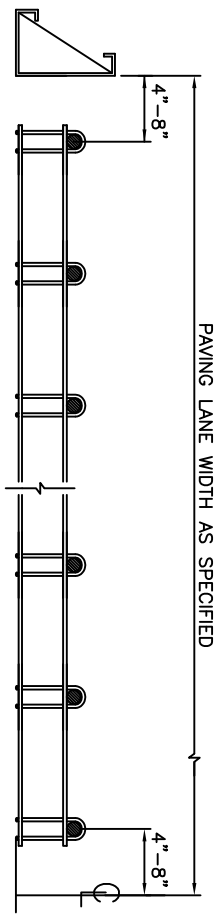
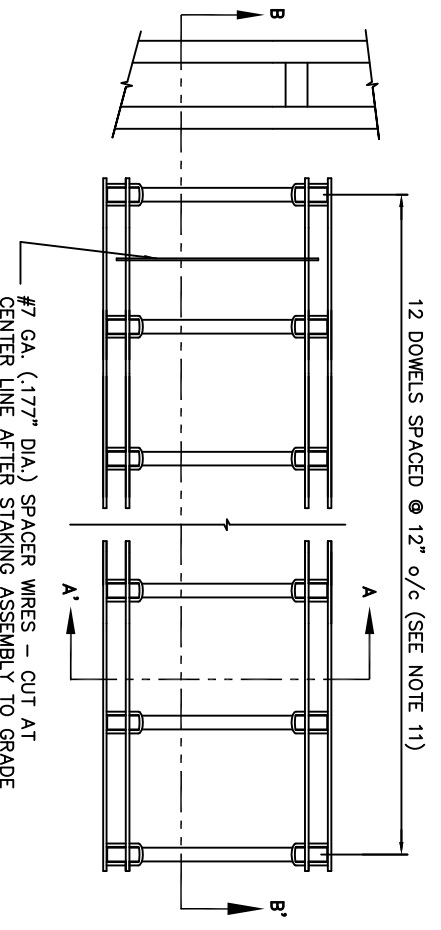


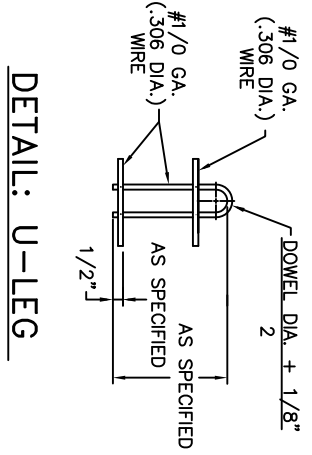
SECTION: A-A'



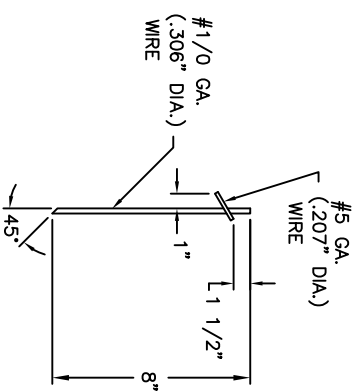
SECTION: B-B'



PLAN VIEW



DETAIL: U-LEG



DETAIL: STAKE

NOTES:

- 1) DOWELS TO BE BILLET STEEL BARS PER AASHTO SPECIFICATION M-31 GR. 60 LATEST REV. (ASTM A-615 GR. 60)
 - 2) DOWEL COATING - EPOXY COATED PER N.Y. STATE D.O.T. SPECIFICATION 705.15 (3M-SCOTCHKOTE 413) 10-18 MILS THICK AND DIPPED INTO TECHTYL 506 BOND BREAKER.
 - 3) DOWELS ARE TO BE SAW CUT AND DEBURRED.
 - 4) WIRE SIZES SHOWN ARE MINIMUM REQ'D.
 - 5) ALL WIRE INTERSECTIONS ARE TO BE RESISTANCE WELDED.
 - 6) SPACER WIRES - CUT IN FIELD AFTER STAKING ASSEMBLY IN POSITION.
 - 7) STAKES - POSITIONED AT WORKING ENDS. 8 REQ'D PER ASSEMBLY.
 - 8) WIRE TENSILE STRENGTH IS TO BE 50,000 PSI MINIMUM.
 - 9) TOLERANCES:
 - A) $\pm 1/8"$ UNLESS OTHERWISE SPECIFIED.
 - B) CENTERLINE OF INDIVIDUAL DOWELS SHALL BE PARALLEL TO SUBGRADE AND ALL OTHER DOWELS IN ASSEMBLY WITHIN $\pm 1/8"$.
 - 10) T = PAVEMENT THICKNESS
 - 11) WHEN THE LANE WIDTH IS DIFFERENT FROM 12' 0" THE MINIMUM EDGE DISTANCE OF 4" - 8" TO THE AXIS OF THE END DOWELS MUST BE MAINTAINED. THE NUMBER OF DOWELS MUST MEET THE DESIGN REQUIREMENTS AND THE SPACING OF THE DOWELS MUST BE ADJUSTED ACCORDINGLY.
- REVISION: A DATE: 10-17-96 BY: I.JONES
 REMOVED CHART WITH VARIOUS PAVING THICKNESSES & DOWEL SIZES. FILED: \WDA\CONTR\BHB559

AMERICAN HIGHWAY TECHNOLOGY
 A DAYTON SUPERIOR CO.
 2150B SOUTH ROUTE 45-52, KANKAKEE, IL. 60901
 PHONE: 815-936-3300 888-743-3751 FAX: 815-936-3306
 WWW.DAYTONSUPERIOR.COM

ITEM	WELDED DOWEL ASSEMBLY (WDA)
PROJECT	TRANSVERSE CONTRACTION JOINT FOR CONCRETE PAVING
LOCATION	NEW YORK
ACCOUNT	NEW YORK DEPT. OF TRANSPORTATION
SCALE	NOT TO SCALE
DRAWN	KEVIN COUCH
DATE	02-24-10
	DRAWING NO. NYS DOT-1
	SHEET 1 OF 1

REVISION: B DATE: 03-12-10 BY: K.COUGH
 REVISION: A DATE: 03-08-10 BY: K.COUGH