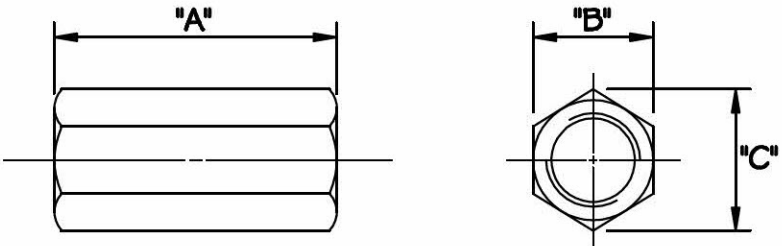
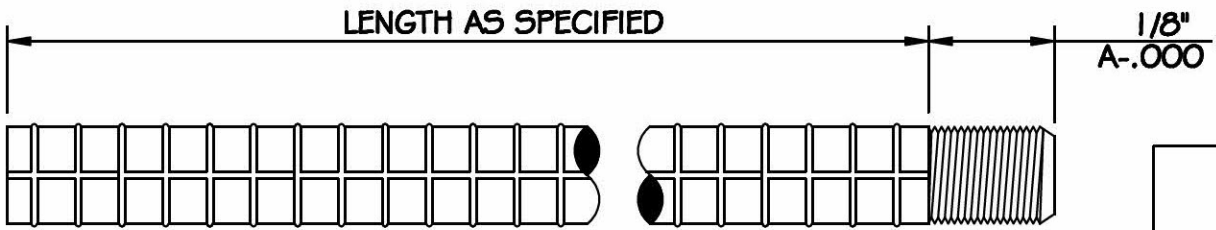


THREADED REBAR, PART A		
REBAR SIZE	THREAD SIZE	"A"
#6	3/4-10 UNC	1"



HEX COUPLING NUT			
THREAD SIZE	"A"	"B"	"C"
3/4-10 UNC	2 1/4"	1"	1 1/8"

MATERIAL: COLD ROLLED MILD STEEL, MINIMUM ULTIMATE TENSILE CAPACITY FOR 3/4" THREAD, EQUALS 24,000 LBS



THREADED REBAR, PART B		
REBAR SIZE	THREAD SIZE	"A"
#6	3/4-10 UNC	1"

NOTES:

- 1.) DEFORMED BILLET STEEL REBAR PER ASTM A615, GRADE 420 (GRADE 60)
- 2.) DEFORMED BAR EPOXY COATED PER ASTM A775 & 12 MILS THICK
- 3.) DEFORMED BAR TO BE SHEARED OR SAW CUT
- 4.) APPLY CORROSION INHIBITOR TO ALL THREADED CONNECTIONS IN THE FIELD BEFORE LJTS ARE ASSEMBLED SUCH THAT ALL SURFACES OF THE ASSEMBLED LJT ARE COVERED WITH AN UNBROKEN SEAL OF EPOXY COATING OR CORROSION INHIBITOR
- 5.) SECURE THE FEMALE END OF THE MULTIPLE-PIECE LJT TO THE FORM WITH A 3/4-10 UNC THREAD BOLT OF SUITABLE LENGTH SO THAT THE FEMALE END IS HELD SECURELY
- 6.) TOLERANCES:
A) +/- .125 UNLESS OTHERWISE SPECIFIED.
- 7.) THREAD SIZE IS IN U.S. CUSTOMARY UNITS

AXELA SERVICES LLC. MOUNT KISCO, N.Y. 10549 (914) 244-0046 (914) 244-0068 (FAX) WWW.AXELASERVICES.COM		
ITEM	MULTIPLE PIECE LONGITUDINAL JOINT TIE	
PROJECT	NYS DEPARTMENT OF TRANSPORTATION	
LOCATION	NEW YORK STATE	
SCALE	NOT TO SCALE	<u>DWG. No.</u> AX-MP 1
DRAWN	RCS	
DATE	4-30-10	SHEET 1 OF 1