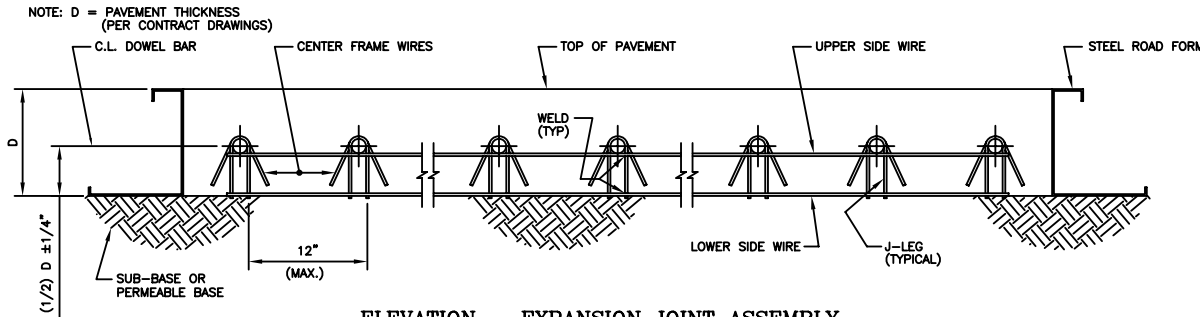
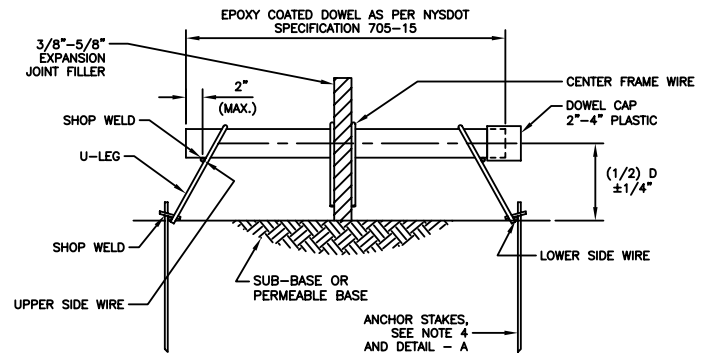
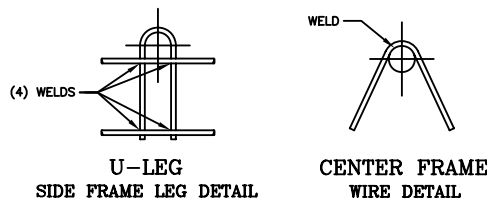


PLAN - EXPANSION JOINT ASSEMBLY

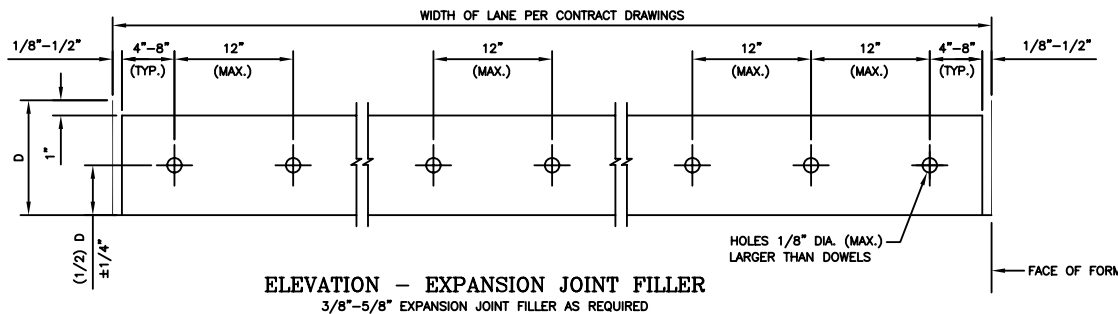


ELEVATION - EXPANSION JOINT ASSEMBLY

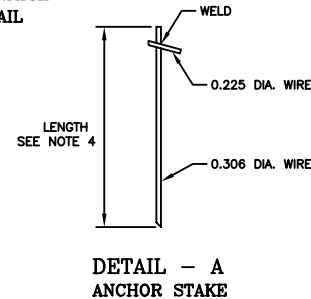
TABLE - WIRE SIZES			
UPPER AND LOWER SIDE FRAME WIRES	"U" LEG SUPPORT WIRES	CENTER FRAME WIRES	SHIPPING WIRES
0.306 ϕ MIN.	0.306 ϕ MIN.	0.306 ϕ MIN.	0.225 ϕ MIN.



END VIEW - EXPANSION JOINT ASSEMBLY



ELEVATION - EXPANSION JOINT FILLER
3/8"-5/8" EXPANSION JOINT FILLER AS REQUIRED



DETAIL - A
ANCHOR STAKE

NOTES:

- 1) THIS STANDARD DEPICTS THE DIMENSIONS REQUIRED FOR UNIFORMITY AND COMPATIBILITY. IT DOES NOT INCLUDE ALL THE DETAILS REQUIRED FOR FABRICATION.
- 2) USE ASTM-A615 GRADE 60 STEEL DOWELS. DIAMETER IN ACCORDANCE WITH CONTRACT DRAWINGS.
- 3) DOWELS EPOXY COATED IN ACCORDANCE WITH STANDARD SPECIFICATION 705-15, 10-18 MILS. EPOXY DOWELS TO BE COATED WITH TECTYL 506.
- 4) USE 12" ANCHOR STAKE WITH PERMEABLE BASE. 8" ANCHOR STAKE WITHOUT PERMEABLE BASE. USE 1 ANCHOR STAKE PER 2'-0" OF ASSEMBLY LENGTH, ALTERNATE SIDES.
- 5) AFTER EACH LOAD TRANSFER ASSEMBLY IS SECURED IN PLACE, CUT SHIPPING WIRES IN ACCORDANCE WITH NYS DOT SECTION 502.
- 6) PROVIDE DOWELS BARS PARALLEL TO THE CENTERLINE AND TO THE PAVEMENT SURFACE. MAKE TOLERANCES OF THIS PLACEMENT WITHIN 1/8" PER DOWEL BAR.
- 7) WIRE TOLERANCES PER ASTM A-82 IS ± 0.005 IN.
- 8) WHAT EVER THE LANE WIDTH, THE DISTANCE FROM THE "EDGE OF LANE", TO THE "END DOWEL CENTER LINE", MUST BE A MINIMUM OF 4"-8". THE NUMBER OF DOWELS MUST MEET THE DESIGN REQUIREMENTS, AND THE DOWEL SPACING MUST BE ADJUSTED ACCORDINGLY (4" MIN, 12" MAX.)
- 9) PLACE DOWEL CAPS ON DOWEL ENDS OPPOSITE WELDS.



MIKE BROOME - WWW.CMC.COM
P.O. BOX 430 LINVILLE, NC 28646
OFFICE (828) 898-4957 - FAX (828) 898-4967 - MOBILE (828) 719-5380

ITEM	TRANSVERSE EXPANSION JOINT FOR CONCRETE PAVEMENT	
PROJECT	NEW YORK DOT	
LOCATION	ALL NEW YORK COUNTIES	
MANUFACTURER	CMC AMERICAS	
SCALE	NONE	DRAWING NO.
DRAWN	TEL	CMC-09-034
DATE	9-29-09	SHEET 1 OF 1