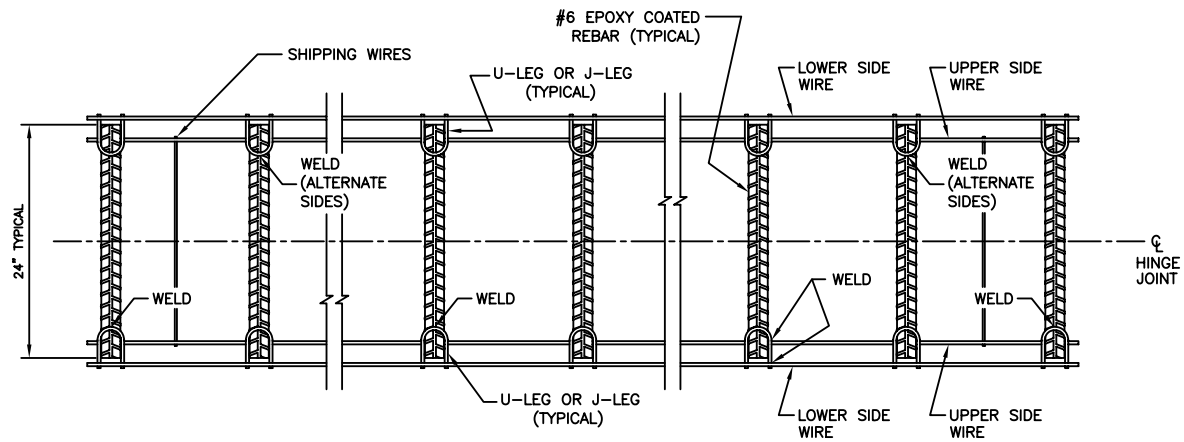
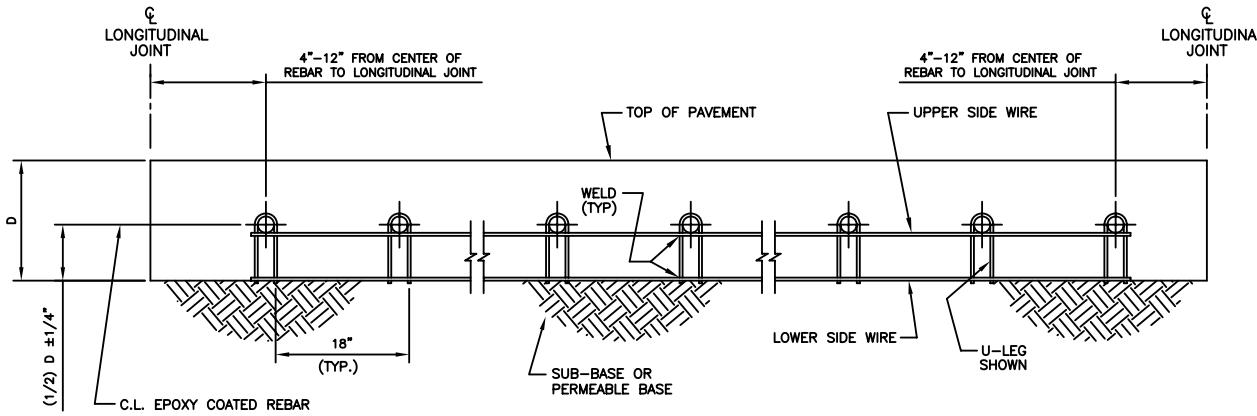


**NOTES:**

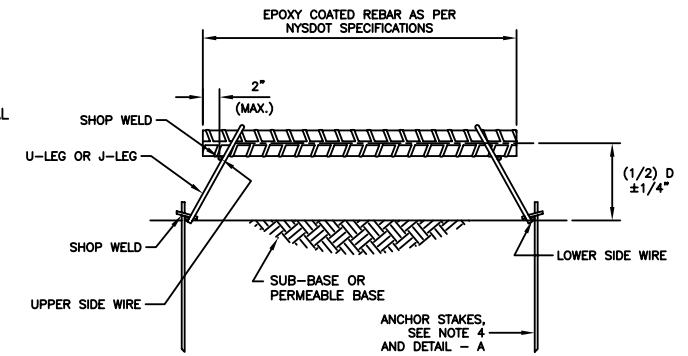
- 1) DEFORMED BILLET STEEL REBARS PER ASTM A-615, GRADE 420 (GRADE 60).
- 2) DEFORMED TIE BAR EPOXY COATED PER ASTM A-775, 8-12 MILS.
- 3) DEFORMED TIE BARS TO BE SHEARED.
- 4) ALL WIRE SIZES SHOWN TO BE A MINIMUM AND ALL WIRE INTERSECTIONS TO BE RESISTANCE WELDED.
- 5) USE ONE STAKE EVERY 2'-0", ALTERNATING FROM ONE SIDE OF THE BASKET TO THE OTHER.
- 6) TOLERANCES:
  - A. +/- 1/4" UNLESS OTHERWISE SPECIFIED
  - B. CENTERLINE OF INDIVIDUAL DOWELS SHALL BE PARALLEL TO SUBGRADE AND ALL OTHER DOWELS WITHIN ASSEMBLY WITHIN +/- 1/4"



**PLAN - TIE BAR ASSEMBLY**



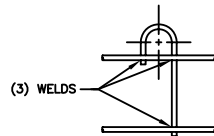
**ELEVATION - TIE BAR ASSEMBLY**



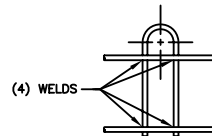
**END VIEW - TIE BAR ASSEMBLY**

NOTE: D = PAVEMENT THICKNESS (PER CONTRACT DRAWINGS)

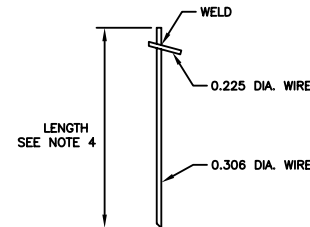
TABLE - WIRE SIZES	
UPPER AND LOWER SIDE FRAME WIRES	"J" LEG OR "U" LEG SUPPORT WIRES
0.306 # MIN.	0.306 # MIN.



**J-LEG SIDE FRAME LEG DETAIL**



**U-LEG SIDE FRAME LEG DETAIL**



**DETAIL - A ANCHOR STAKE**



MIKE BROOME - WWW.CMC.COM  
 P.O. BOX 430 LINVILLE, NC 28648  
 OFFICE (828) 898-4957 - FAX (828) 898-4967 - MOBILE (828) 719-5380

ITEM	TRANSVERSE HINGE JOINT TIE BAR BASKET	
PROJECT	NEW YORK DOT	
LOCATION	ALL NEW YORK COUNTIES	
MANUFACTURER	CMC AMERICAS	
SCALE	NONE	DRAWING NO.
DRAWN	TEL	CMC-10-019
DATE	3-15-10	SHEET 1 OF 1