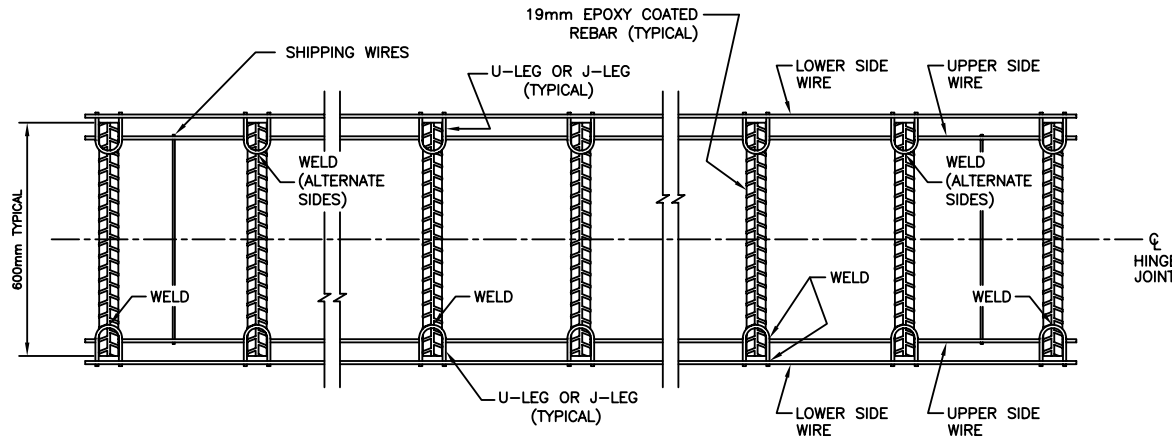
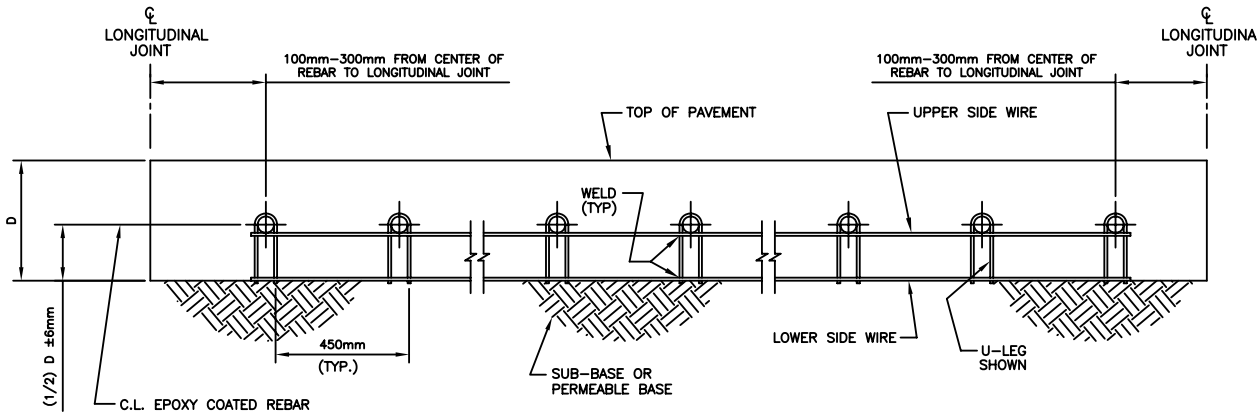


NOTES:

- 1) DEFORMED BILLET STEEL REBARS PER ASTM A-615, GRADE 420 (GRADE 60).
- 2) DEFORMED TIE BAR EPOXY COATED PER ASTM A-775, .203mm-.305mm.
- 3) DEFORMED TIE BARS TO BE SHEARED.
- 4) ALL WIRE SIZES SHOWN TO BE A MINIMUM AND ALL WIRE INTERSECTIONS TO BE RESISTANCE WELDED.
- 5) USE ONE STAKE EVERY 610mm, ALTERNATING FROM ONE SIDE OF THE BASKET TO THE OTHER.
- 6) TOLERANCES:
 - A. +/- 6mm UNLESS OTHERWISE SPECIFIED
 - B. CENTERLINE OF INDIVIDUAL DOWELS SHALL BE PARALLEL TO SUBGRADE AND ALL OTHER DOWELS WITHIN ASSEMBLY WITHIN +/- 6mm

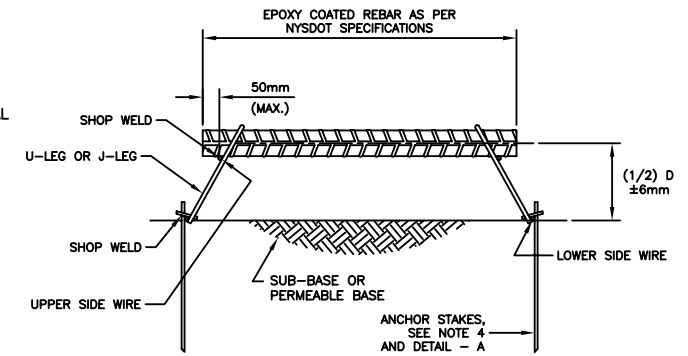


PLAN - TIE BAR ASSEMBLY



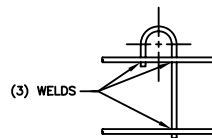
NOTE: D = PAVEMENT THICKNESS (PER CONTRACT DRAWINGS)

ELEVATION - TIE BAR ASSEMBLY

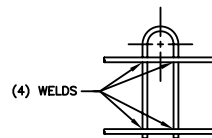


END VIEW - TIE BAR ASSEMBLY

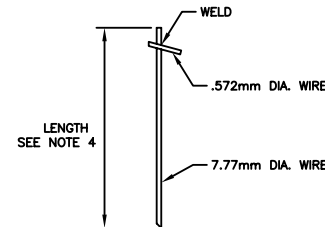
TABLE - WIRE SIZES	
UPPER AND LOWER SIDE FRAME WIRES	"J" LEG OR "U" LEG SUPPORT WIRES
7.77mm Ø MIN.	7.77mm Ø MIN.



J-LEG SIDE FRAME LEG DETAIL



U-LEG SIDE FRAME LEG DETAIL



DETAIL - A ANCHOR STAKE



MIKE BROOME - WWW.CMC.COM
 P.O. BOX 430 LINVILLE, NC 28646
 OFFICE (828) 898-4957 - FAX (828) 898-4967 - MOBILE (828) 719-5380

ITEM	TRANSVERSE HINGE JOINT TIE BAR BASKET	
PROJECT	NEW YORK DOT	
LOCATION	ALL NEW YORK COUNTIES	
MANUFACTURER	CMC AMERICAS	
SCALE	NONE	DRAWING NO.
DRAWN	TEL	CMC-10-020
DATE	3-15-10	SHEET 1 OF 1